

Cleats & Cable Fixings



Stainless Steel Trefoil Cleat 379TC Series

Application

- > Low and High Voltage single core cables with high fault current capacities. (Standard and LSOH cable sheaths)
- > Cable Diameters from 23mm to 128mm
- > Can be used in Harsh Offshore environments.
- > Suitable for use with all standard ladder and tray systems.
- > Resistant to short circuits up to 80 kA. RMS
- > Operating temperatures -40°C to +120°C

Features

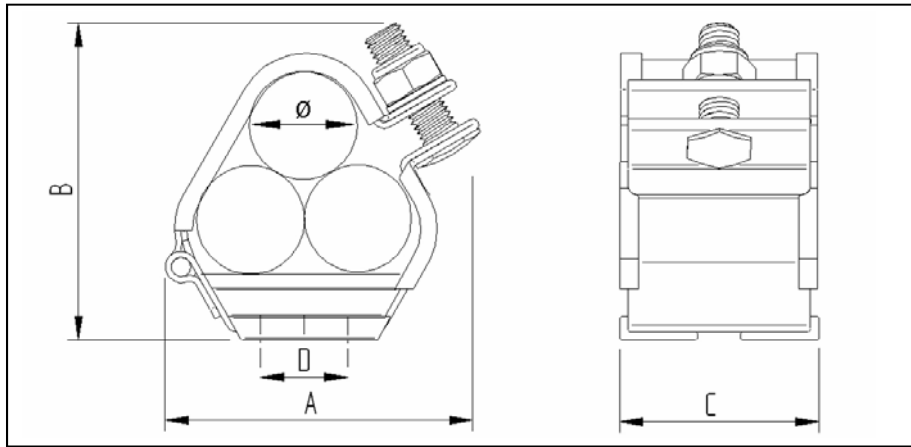
- > Single or double bolt fixing
- > Complies with IEC 61914:2009
- > Ergonomic design allows easy installation, with single tool tightening from top side.
- > Manufactured from Non-Magnetic corrosion resistant 316L stainless steel.
- > Inserts and liners made from Low Smoke and Zero halogen materials.

Cleats & Cable Fixings

Stainless Steel

Trefoil Cleat

379TC Series



Dimensions

A	Width
B	Height
C	Length
D	Hole Centres
Ø	Cable Diameter

Technical Data

Cleat Selection			Cleat Details			
Design Number	Cable Range		Dimensions (mm)			
	Ø Min	Ø Max	A	B	C	D
379TC01	23	28	86	71	60	Centre hole only
379TC02	27	32	92	78	60	25
379TC03	30	35	98	84	60	25
379TC04	33	38	102	90	60	25
379TC05	36	42	108	97	60	30
379TC06	40	46	115	105	60	40
379TC07	44	50	120	112	60	40
379TC08	48	55	129	121	60	50
379TC09	51	58	133	127	60	60
379TC10	55	62	140	134	60	60
379TC11	59	66	145	142	60	70
379TC12	63	70	150	150	60	70
379TC13	67	74	157	157	60	80
379TC14	71	78	164	164	60	80
379TC15	74	82	172	172	60	90
379TC16	77	85	178	178	60	90
379TC17	82	88	184	184	60	100
379TC18	88	96	200	198	60	110
379TC19	96	103	214	210	60	110
379TC20	103	111	230	225	60	130
379TC21	111	119	245	240	60	140
379TC22	119	128	264	257	60	160

All cleats have a single central fixing hole for a 12mm diameter fixing bolt. Styles 02 to 22 can be also fixed with 2 x 10mm bolts – the 10mm clearance holes are positioned either side of the central hole with centres as per dimension D.

Performance Data

Test Standard BS EN 61914:2009 (IEC 61914)

	Clause	Classification		Clause	Classification
Type	6.1.3	Composite	Resistance to Short Circuit	6.4.3 (1 Short Circuit)	76kA RMS, 169kA Pk, Ø=36mm, Spacing=300mm
Operating Temperature	6.2	-40°C to +120°C			80.3kA RMS, 178kA Pk, Ø=36mm, Spacing=225mm
Impact Resistance	6.3	V. Heavy		6.4.4 (2 Short Circuits)	67.5kA RMS, 146kA Pk, Ø=36mm, Spacing=300mm
Needle Flame	10.1	>120secs	Corrosion	6.5.2	High, Outdoor - wet conditions

* Technical Information subject to change without notice.